



Ishrakat Al-Najim General Trading & Contracting Co. LTD

Company Profile

Basra – Iraq

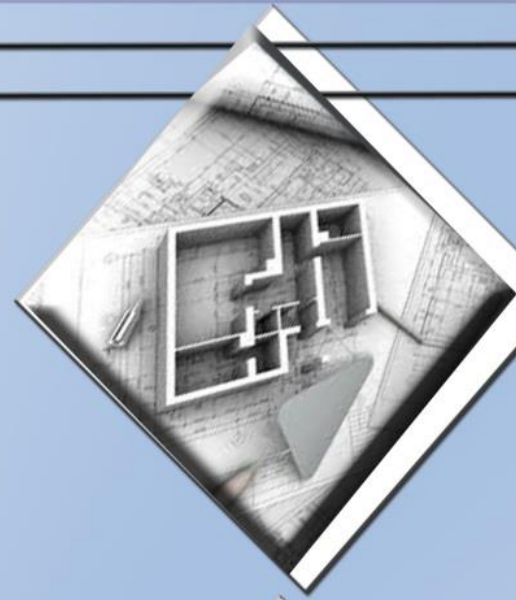
Mobile: 009647708419111 –

009647707052777- 009647906666085

Email: wasfie@ishrakatalnajim.com

info@ishrakatalnajim.com

info@nahindustry.com



ABOUT US

ISHRAKAT ALNAJIM is client-focused design,build,manage construction service provider.we believe that creating strategic partnerships with our clients enables us to provide the right solution .for each project.the skills of our people,our proven sub-consultants

WHAT WE DO

DESIGN

ISHRAKAT ALNAJIM engineering,LLC,provides mechanical,electrical,plumbing,fire protaction technology and renewable energy design and consulting services.our itellectual capital and experience sets us apart from other traditional engineering firms

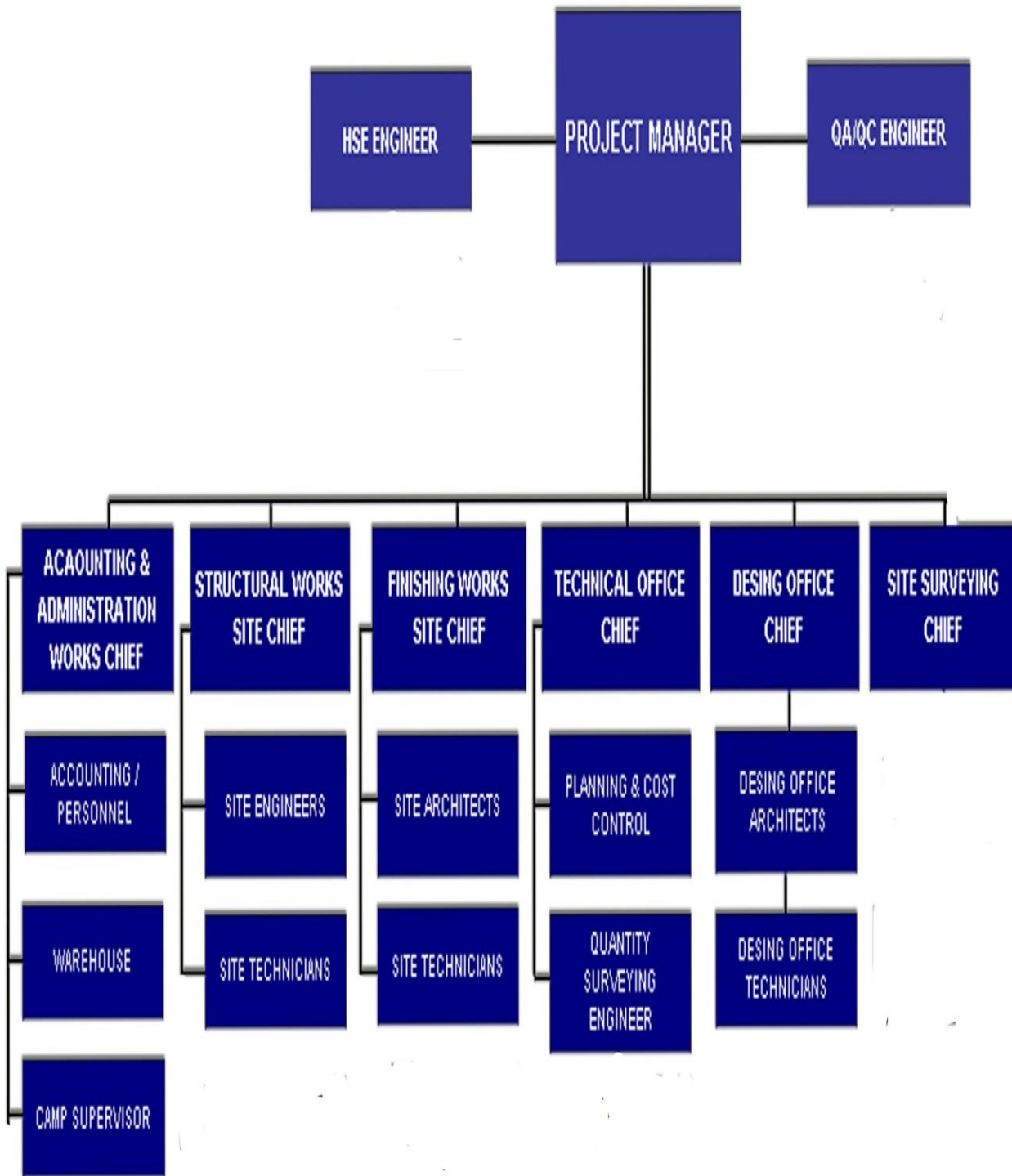
BUILD

ishrakat alnajim construcion services ,LLC,is fully capable and well qualified to manage multi-disciplined construction and design/build project .our experence is vast and diverse in amount and types of projects successfull accomplished.we provide flawless construction support to client,no matter what the project scole entailed thereby establishing a strong reputation for excellence

MANAGE

ISHRAKAT ALNAJIM corporation understands and has expertise in all phases of the pre-construction,and commissioning processes .we offer government-like sevices which include preliminary designs for tenders,bids and bidders review,awardee recommendation,and construction performance/schuedule/cost/safety oversight through commissioning

organization chart





SAFTEY

For the past years ISHRAKAT AL-NAJIM has held an annual company-wide safety stand-down at every job site. The safety stand -down takes place at the start of the first work day after Labor Day weekend. Work is suspended for an hour as jobsite staff gathers to listen to important themes of safe work practices. ISHRAKAT AL-NAJIM safety managers delivered an important safety message. Lean and safe : material management for a safer work environment with a commitment to improve project outcomes through the integration of innovative practices and technologies



Quality Assurance

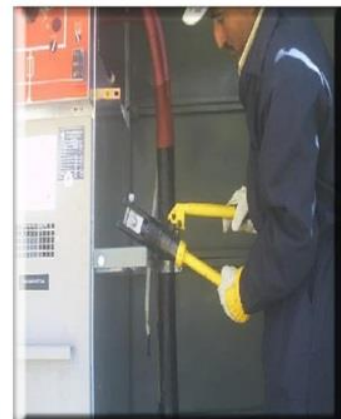
Our factor – trained staff regularly inspects and maintains every piece of equipment we carry and rent we up to date inspection reports , ensuring its up for the job . we also carry a wide assortment of new equipment and contractor supplies.



OUR EMPLOYEES

*Self -Perform Work
and Supply of Experienced Labor*

ISHRAKAT AL-NAJIM field employees assembled behind a ISHRAKAT AL-NAJIM sign
ISHRAKAT AL-NAJIM is Know as a construction company with a seasoned and a can-do attitude . As a leading employer, ISHRAKAT AL-NAJIM attracts top talents who bring fresh perspectives to the .organization





Equipment and Tool Rental

Equipped for your Success

To do the job well make sure we deliver exactly the equipment you need ,exactly when and where your need it .our goal is to make equipment rental as easy , .convenient and quick as possible here,s how we do it

Any Equipment for Any Job

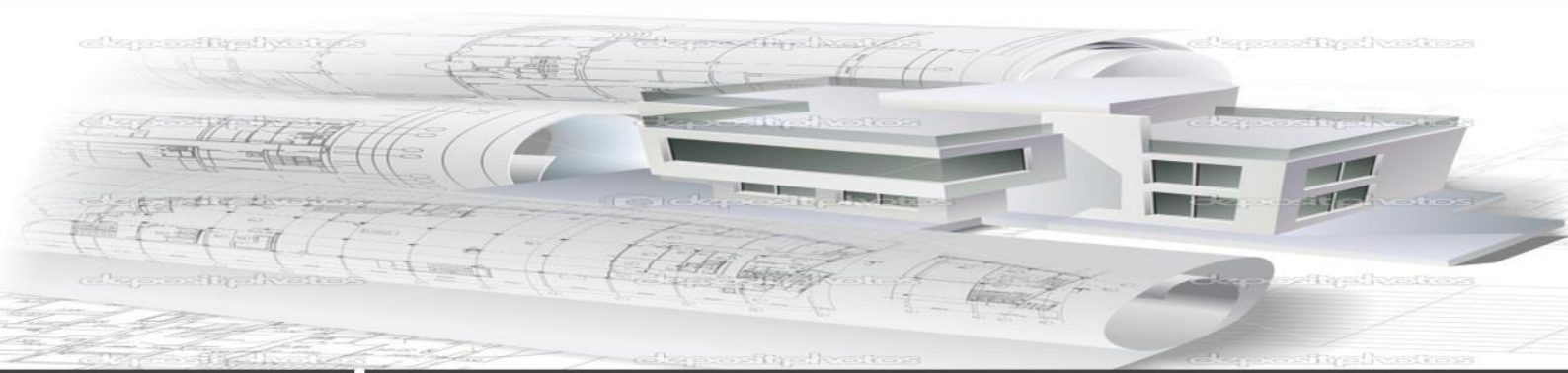
From air compressor to forklifts dump trucks to cranes we offer a wide range equipment to meet your complete needs . If we don't have a piece of equipment in stock, well find one for you

We Deliver

Our staff is on call 24 hours a day , 7 days a week to meet your requirements . with just a single call , our dispatch unit will deliver on all your equipment needs . our dispatch also maintains constant communication with all service trucks and delivery units , so we always know where our / your equipment

Rapid Response

We give an 24 hours window we guarantee that if you need that type of equipment urgently will get it to you before the 24 hours is up . And because our facilities are centrally located, well deliver and pick up our equipment promptly

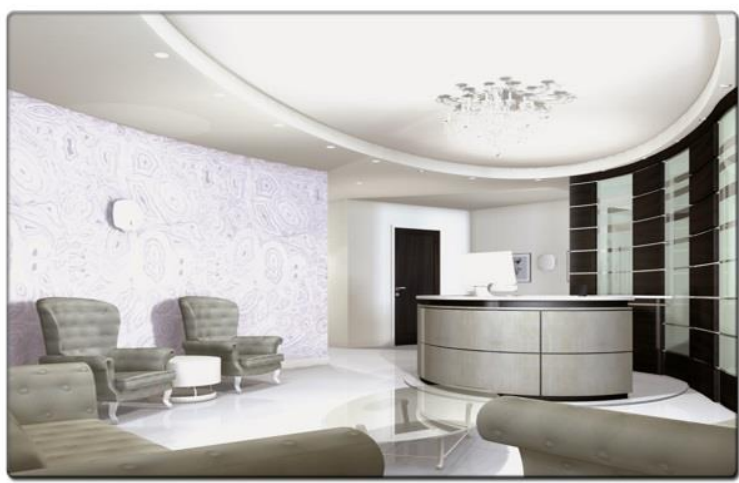


DESIGN

Exterior design



interior design



DESIGN

interior design



Gypsum Board



Paint





work

ISHRAKAT AL-NAJIM Construction Services , is fully capable and well qualified to manage multi-disciplined construction and design / build projects

our experience is vast and diverse in the . * amount and types of projects successfully accomplished . We provide flawless construction support to clients, no matter what the project scope entailed thereby establishing a strong reputation for excellence. Our four corporate values are : safety, quality , client satisfaction , and integrity . By implementing these values , we have developed strong relationships with clients , key subcontractors . and suppliers





work

JETGIPS

Application field The product is applied on all kinds of surfaces such as brick , bims block , aerated concrete block , gross concrete block , gross concrete and cement based plaster Preparation and application

If necessary , alignment laths and corner plaster profiles should be placed on the surface , under the plaster in order to level and align the surface

Jetgips should be sprayed and smoothed uniformly at the desired thickness from a distance of 10-15 cm from the surface between the alignment laths in upwards direction . Since the plaster will penetrate into the joints and cavities with the spraying pressure , a better adherence will be obtained





work

Important

This product is very healthy and environmental. The temperature of the area and the surface to be applied should not be below + 5c. The hand tools to be used in application should be clean. Oil, dust, lime, mold and dirt on the surface, if any, should be cleaned and loose and falling parts should be repaired. Before the application, it is important that the surface is not too dry or wet. Usage of mesh application is recommended where different substructures meet. If necessary, mesh can be applied the whole surface together with plaster. Best performance can be achieved by using a PFT machine. Operate G4 machine at 1 bar of pressure per meter length of the hose as shown on the G4 manometer.



work

Easily cleaned , does not dust , hygienic and antibacterial
Economic solutions for use
Can be used as a surface leveling and filling material



CHARACTERISTICS

Primers of low viscosity provide high penetration consequently increasing concrete resistance and create an adhesion bridge to subsequent coats

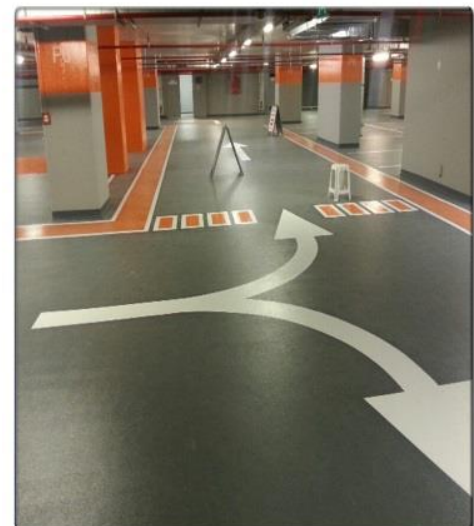
The product creates a film on the concrete surface and provides a thickness for coating

It has a high adhesion strength on concrete surfaces (it must always break off the concrete at pull – off test)



WHERE TO USE

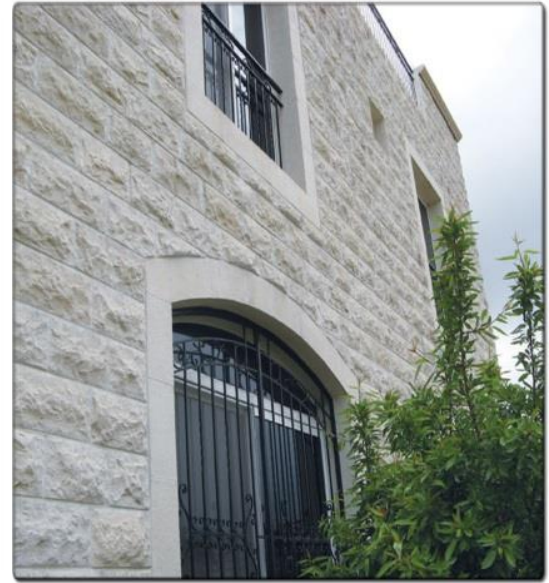
Applied as midlevel coat or final coat for coating on concrete in warehouses shopping centers , workshops , schools , hospitals , pharmaceutical sector , food sector , laboratories , treatment plants , showrooms , areas where corrosive chemicals are used
Used as coating in open terraces and areas around and areas around swimming pools on rubber applications for indoor sports facilities , in spaces where sound absorption characteristics are required schools , kindergartens , universities , cold stores and cargo spaces of refrigerated trucks
Used as final coat on metal concrete in factories , warehouse shopping centers , workshops , aircraft hangars , schools , hospitals , pharmaceutical sector , water tanks , food sector , laboratories , parking areas , treatment facilities , areas where heavy forklifts and corrosive chemicals are used
May be used as wall coating to increase mechanical / chemical strength and also it can be applied if hygiene required for walls



NATURAL STONE

Natural stone has been the first choice of architects and engineers in building construction through out history

Although very hard to produce , stone is always preferred due to its unique aesthetic and functional qualities that largely satisfy the necessities in building construction Stone is a physically strong and durable material , and performs well under compressive forces egIt has a much longer life span Requires very little maintenance other than cleani It provides a good insulation and ideal protection against climatic conditions due to its low heat transfer factor Hence it is regarded as an ideal building material for exteriors as well as interiors



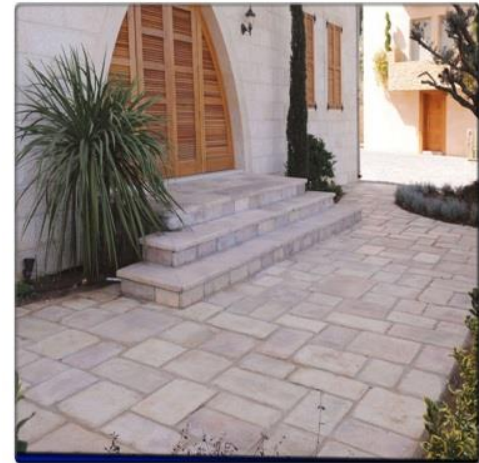
METHOD OF CONSTRUCTION

Natural building stone is chosen as buildings cladding material because of its beauty , low maintenance and resistance to the effects of weather

However , unless good judgment is exercised in the choice of the particular stone , the method of attachment and the installation procedure , the benefits of a properly executed stone cladding can be lost installation design and techniques that fail to recognize the capabilities and limitations of the stone it self and that do not accommodate the forces at work on the stone can result in the failure of this cladding material to function properly

DESIGN SERVICE

Application of natural stone on projects requires a team of specialized architects and civil engineers marble has a technical staff to provide this service Architectural drawings are used to design the natural stone installation for the internal and external walls of the building . Suitable thickness and size of panels are determined according to the specifications of the project After natural stone design has been made details of fixing systems for the installation of the panels are prepared . In this process the points on walls for anchoring and the drilled holes on the panels are determined



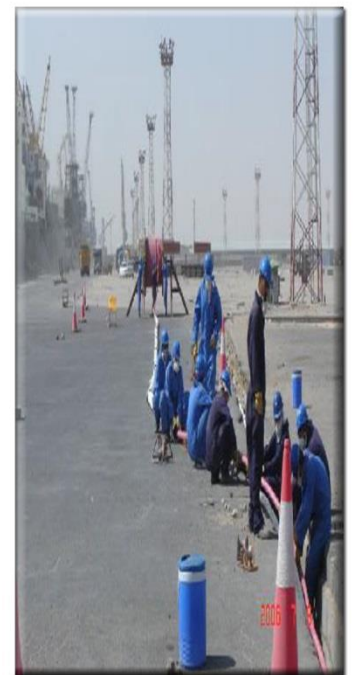


Projects

Name: Construction of Sewage water treatment plant for 20,000 population
 Client: Ministry of Municipalities and public works/ .Sewerage general Directorate
 Scope of work: Construction of concrete tanks for screening, Oil and solid removal tanks, clarifies, ,collection tanks
 .aeration tanks and drying beads
 Installation of electro-mechanical equipments (pumps, screen, shredder, bowering units, sold ,.handling equipments
 nozzles, filters, chlorination units, valves, fitting and .(accessories, Generators and ATS
 Installation of power transformers, MV & LV switchgears panels boards, cabling , lighting and .(wiring
 Location: Samawah city, Muthana Governorate



Name: Emergency power sub-station for Nelcon Cranes
 Client: Project and contracting office, Ministry of electricity
 Scope of work: Installation of 2x2.5 MVA generators, 2x2.5MVA 11/0.4 KV transformers, 4 way 4 panels 11KV panel boards
 2x1 MVA 11/3.3 KV transformers, 2x250KVA 11/0.4 KV transformers, switchgear 3.3KV 3 way 3 panel boards
 Installation of 3.3KV cables to cranes, and Installation of 2 disconnect switches to cranes
 Complete refurbishment the power room at berth 9 and concrete casting the cable route to the cranes' termination vaults
 Location: Berth #5, Um Qasser port-Basar





Projects

Name: Emergency power sub-station for Nelcon Cranes

Client: Project and contracting office, Ministry of electricity

Scope of work: Installation of 2x2.5 MVA generators, 2x2.5MVA 11/0.4 KV transformers, 4 way 4 panels 11KV

,panel boards

2x1 MVA 11/3.3 KV transformers, 2x250KVA 11/0.4 KV transformers, switchgear 3.3KV 3 way 3 panel

,boards

Installation of

3.3KV cables to cranes, and Installation of 2

.disconnect switches to cranes

Complete refurbishment the power room at berth 9 and concrete casting the cable route to the cranes' termination

.vaults

.Location: Berth #5, Um Qasser port-Basar



CPECC China Petroleum Co. Pre-Fabric Houses .project

Location: Halfayah Oil Field – Maysan – Iraq

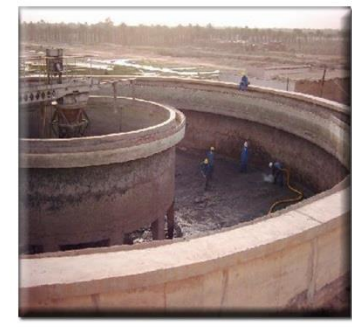
Total Project Amount: \$ 1,151.00 Period : 6 months

.JV with Hera Co

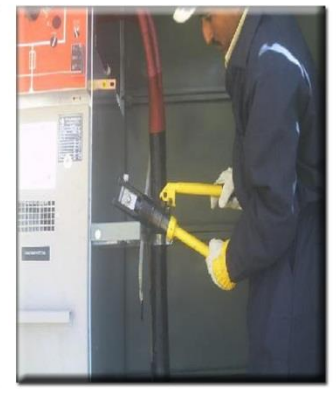
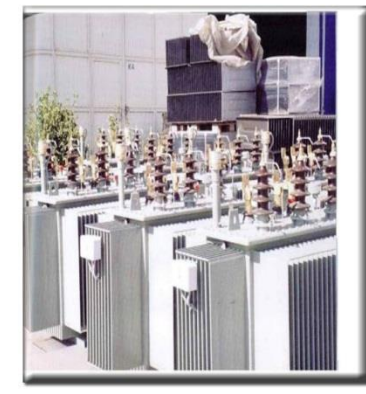


Projects

Name: Refurbishment of Shat Al-Arab Water Treatment Plant in Basrah
Client: Bechtel International Sys. Inc
Scope of work: Complete refurbishment of the civil works of the 2,000 M3/hr conventional unit for the clarifier tanks, gravity sand filters, collection tanks, replacement of filter media and perforated pipes
Replacement of all fittings and valves,
replacement of weir channels and nozzles
Replacement of generators, ATS, switchgear, control and power panels
Location: Shat Al Arab District –Basra



Name: Al-Asrea Area Electrification
Client: Project and contracting office- Electricity
Scope of work: Supply and installation of 40 Kiosk mounted power transformer, 1000 KVA capacity with MV and LV switch gear
Installation of 20 KM of ACSR 11KV overhead line on lattice and round poles
Installation of 24 KM of PE insulated twisted cable for low voltage
Installation of 1050 Poles for overhead,
Installation of grounding system
Location: Asrea Area , Diwaniya governorate



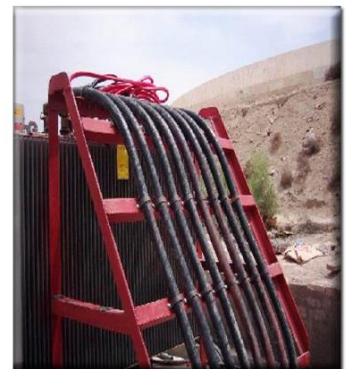


Projects

Name: Construction of Al-Khernobiah Border Fort on Iraqi-Iranian border
Client: parsons Delware , Safety and justice project in Iraq
Scope of work: Construction of complete turn-key project of border fort on Iraqi-Iranian borders including all electro-mechanical and power services
Building Area: 700 M2
Fort Area: 3,000 M2
Location: Al- Khernobiah district, Basra



Name: Refurbishment of Ar Rybat Water Treatment Plant in Basra
Client: Bechtel International Sys. Inc
Scope of work: replacement of 50% and refurbishment of 50% of all mechanical and electro-mechanical equipments
(pumps, Alum Dozing units, Chlorination units)
Replacement of Power generators and MV & LV switchgears, power and control panels
Plant capacity is 600 M3/hr for 3 compact units x 200 M3/hr capacity
Location: Ar Rybat Neighborhood- Basra down town





Projects

Name: Containers' Yard in Berth #4 , Um Qasser port

Client: CMA-CGM, France

Scope of work

Concrete pavement for the container's yard in berth No.4 of Um Qasserport, 70,000 M2 Construction of the two story administration building

Construction of workshop for the equipments .

Installation of lighting fixtures for the yard .

Installation of CCTV camera system .

Marking and installation of signs for the storing guide on yard .

Installation of security chain link fence along the perimeter with security gate

Supply and installation of 18 quay fenders with the rehabilitation of its steel structure

Construction of the retaining wall in the back side of the site .

Loading/unloading platform rehabilitation .





Projects

Name: Containers' Yard in Berth #4 , Um Qasser port
Client: CMA-CGM, France



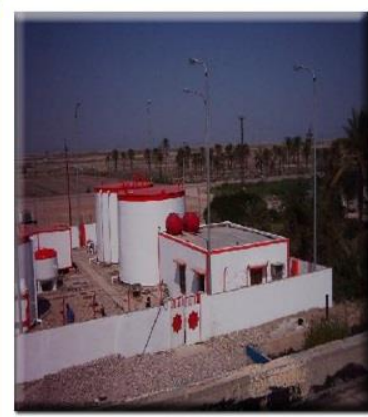


Projects

Name: Dredging Sweet Water Canal Reservoirs
 .Client: Bechtel International Systems Inc
 Scope of work: Dredging of 340,000 M3 .of sediments
 .Re-paving damaged concrete panels
 .Re-building damaged baffle walls
 Location: Abu Sukair, North of Basra



Name: Installation of new 70M3/hr RO Units /
 Client: Coalition Provisional Authority (CPA) South
 Client: Coalition Provisional Authority (CPA) South/
 Scope of work: Installation of 2x70 M3/hr RO units
 Construction of intake water unit on Tigris river, construction of 400 M3 storage tank and
 'construction of operators and guards room./ Installation of power transformer and switch gear. / Location :
 Qurna - Basra

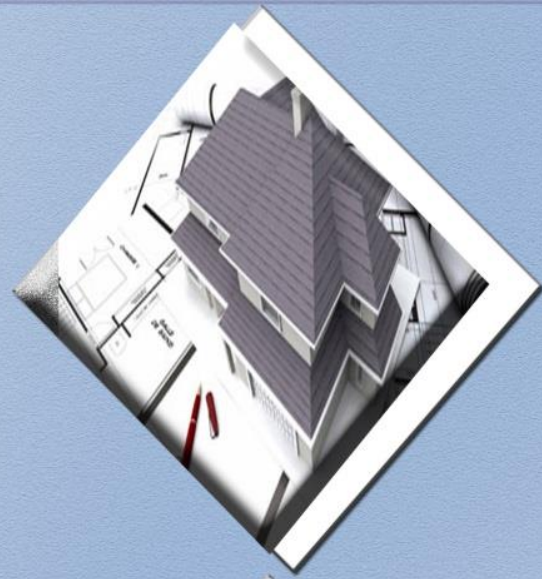


CONTACTS

**MOBILE: 009647708419111 –
009647707052777-
009647906666085**

**EMAIL: WASFIE@ISHRAKATALNAJIM.COM
&INFO@ISHRAKATALNAJIM.COM &
INFO@NAHINDUSTRY.COM**

WEBSITE: WWW.ISHRAKATALNAJIM.COM



Ishrakat Al-Najim General Trading & Contracting Co. LTD

Basra – Iraq

Mobile: 009647708419111 –

009647707052777- 009647906666085

Email: wasfie@ishrakatalnajim.com

info@ishrakatalnajim.com

info@nahindustry.com

Website: www.ishrakatalnajim.com